

# Early Stage Bi-Lateral Kerataconus

CONTAMAC

contamac.com



Patient NS Male Age: 31 years

## Silicone Hydrogel Kerataconus lenses

**History:** In 2001 NS consulted his optometrist for a refit of his monthly soft contact lenses. At this appointment, the optometrist diagnosed early Keratoconus in both eyes. The decrease in VA was not appreciable at this time, so NS continued to wear his monthly toric lenses 3/2010

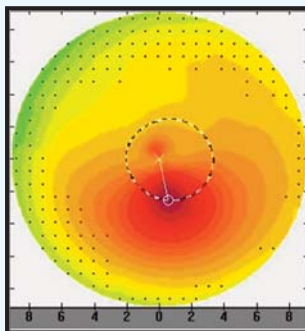
After several refits with the monthly lenses and gradual increases in cylinder power, NS detected a low but now noticeable decrease in VA. After further consultation it was decided to try GP contact lenses. Subsequently, NS reports comfort problems at work. NS is a carpenter and works in a dusty environment. Even with the aid of eye protection, the foreign body discomfort culminated in NS discontinuing the lenses and reverting to spectacles. At the resulting consultation, soft Keratoconus lenses were prescribed in an attempt to improve wear time and VA.

### Follow up refraction:

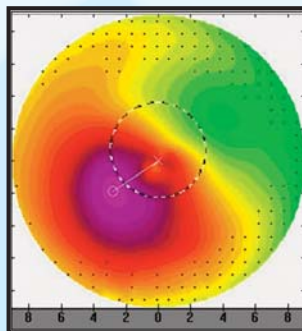
OD: -5.50 / -3.50 x 143° VA : 4/6

OS: -6.00 / -1.50 x 11° VA 5/6

### Topography: RE



### LE



OD: 7.61 @ 133° / 7.68

OS: 7.85 @ 9° / 7.63 Diameter cornea 11.90 mm

### First soft lenses:

OD: Toris K12: BC 8.00 ; Power -5.75 / -0.01 x 0° ; Diameter 14.00 ; Definitive SIH

OS: Toris K12: BC 8.20 ; Power -5.75 / -0.01 x 0° ; Diameter 14.00 ; Definitive SIH

Toris K12 is a soft contact lens, specially made for Stage 1 and Stage 2 Keratoconus. For Stages 3 and 4 diagnostic lens Toric K34 are used. The diagnostic lenses have a -0.01D Cylinder.

### Fit Assessment:

OD/OS: good movement and centering;

**Over refraction:** OD : +0.50 / -2.25 x 134° VA 5/6+ Stabilisation @ 004°

OS : -0.25 / -1.00 x 004° VA 6/6 Stabilisation @ 180°

Good initial comfort and improving after 1 hour insertion time.



**Second soft lens:**

**OD: Toris K12: BC 8.00 ; Power -5.25 / -2.12 x 130° ; Diameter 14.00 ; Definitive SIH**

**OS: Toris K12: BC 8.20 ; Power -6.00 / -0.96 x 4° ; Diameter 14.00 ; Definitive SIH**

**Fit Assessment:**

OD/OS: good movement and centering; VA OD: 5/6+ OS:6/6 Binocular: 6/6+

Good levels of comfort are reported after the initial insert time and the lenses perform well in the challenging work environment. The wear time increases dramatically.

**Conclusion:**

With the new Definitive SIH, combined with the special geometry for Keratoconus, NS has reported improved comfort levels comparable to his original monthly toric lenses, but with greatly improved VA .

**Distributed by:**



[www.swisslens.ch](http://www.swisslens.ch)

SwissLens SA  
Ch. des Creuses 9  
CH-1008 Prilly  
Switzerland

Telefon: +41 21 620 06 68



**Contamac Ltd**

Orchard House Bearwalden Business Park  
Wendens Ambo Saffron Walden  
Essex CB11 4JX UK

Tel: +44 (0)1799 544400  
Fax: +44 (0)1799 543000

E-mail: [professionalservices@contamac.com](mailto:professionalservices@contamac.com)



**Contamac US**

806 Kimball Avenue  
Grand Junction, CO 81501

Tel: 1-(970) 242 3669 Fax: 1-(970) 243 5501  
Toll Free: 1-866 US CONTAMAC  
(1-866 872 6682)

E-mail: [professionalservices@contamac.com](mailto:professionalservices@contamac.com)